

ENTRY LEVEL INFRARED DRYERS

D1-SERIES



**15 YEAR
HEATER WARRANTY**



CE CERTIFIED
BY CERTIFICATION EXPERTS
THE NETHERLANDS

D-100

16" x 16" (40.64 x 40.64 cm)

1,625 watts (1.625 kW)

18" (45.7cm) x 46" (1.17m)

16" (40.6cm)

120V, NEMA 5-15P, 12.5A

240V, NEMA 6-15P or Int'l plugs, 6.5A

18" (45.7cm)

110/hr

50/hr

46" x 24" x 24" (117 x 61 x 61 cm)

Heater

Wattage

Belt Width / Conveyor Length

Heater Width**

Power Requirements

Chamber (tunnel) Length

Cure Speed - Plastisol @ 25 secs.*

Waterbased/Discharge @ 70 secs.*

Assembled Dimensions

D-1000

16" x 20" (40.64 x 50.8 cm)

2,050 watts (2.05 kW)

26" (66cm) x 56" (1.43m)

20" (50.8cm)

120V, NEMA 5-20P, 16.5A

240V, NEMA 6-15P or Int'l plugs, 8.2A

18" (45.7cm)

110/hr

50/hr

56" x 32" x 24" (143 x 81 x 61 cm)

Features

- SMART** Teflon coated fiberglass belt with tracking system
- ADJUSTABLE** Speed, temperature, heater height and tilt
- FAST** 110+* shirts per hour with plastisol and 50+* with discharge
- PRECISE** Powerful infrared heater with tight coil pattern and heat shields
- VALUABLE** Best warranty, high quality, exceptional service
- COMPACT** Total footprint is less than 8 sq.ft. (2.44 sq.m) on the D-100 and about 10 sq.ft. (3 sq.m.) on the D-1000



Options

Stand for D-100

SI-27



Stand for D-1000

**SI-27 W/
SI-27-DEMT**



Our dense coil pattern, heater shields and a 6.35 watt per sq-in infrared heater eliminates hot and cold spots.

For more compact shipping, the D-100 and D-1000 are partially assembled.

Optional factory assembly at additional charge.

* Production speeds are estimates are based on 16" centers and will vary depending on ink manufacturer, humidity of shop, and other variables.

** Recommended maximum image width = heater width minus 4" (10cm).



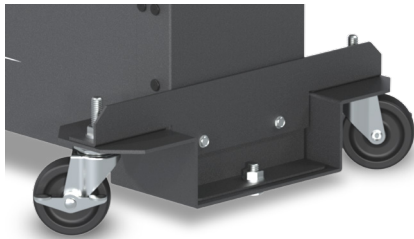
INFRARED DRYER ACCESSORIES



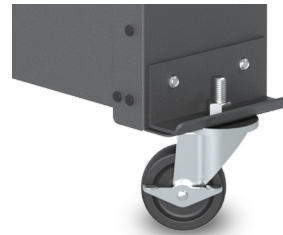
SI-27
Stand for D-100



**SI-27 W/
SI-27-DEMT**
Stand for D-1000

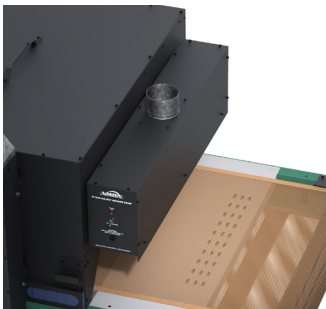


WS-EDD
Drop Down Wheel Set for
DB, LR & EC-I Dryers



WS-EC
Standard Wheel Set for
all non-tabletop Dryers

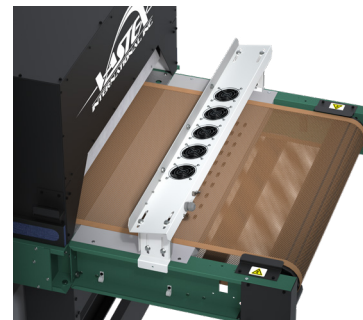
WS-EHD
Drop Down Wheel Set for
EC-II, ER & BR Dryers



EXHAUST HOOD

FEATURES

- Removes fumes at exit the dryer
- EXH-30 fits 30" (76cm) wide belts
- EXH-54 fits 54" (137cm) wide belts
- Available in 120v or 240v



CONVEYOR AIR BAR

FEATURES

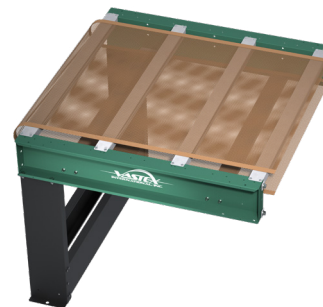
- Cools ink as garments exit the dryer
- CAB-30 fits 30" (76cm) wide belts
- CAB-54 fits 54" (137cm) wide belts
- Work on many non-Vastex dryers
- Available in 120v or 240v



HAT SUPPORT RAIL

FEATURES

- Angles hats so front is parallel with heaters
- HR-1 fits EconoRed II dryers
- HR-2 fits EconoRed III & BigRed Dryers



CONVEYOR EXTENSIONS

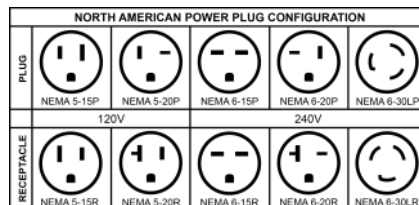
Extend your conveyor in
18" (46cm), 36" (92cm) and
54" (137cm) increments



D-100, D-1000, & LittleRed Technical Specifications



	D-100	D-1000	LR-X1-30	LR-X2-30	LR-X1-54	LR-X2-54	LR-X3-30	LR-X3-54
Heater Warranty	15 Year	15 Year	15 Year	15 Year	15 Year	15 Year	15 Year	15 Year
Defect Warranty	3 Year	3 Year	3 Year	3 Year	3 Year	3 Year	3 Year	3 Year
Shirts / Hr Plastisol	110+@ 25 secs.	110+@ 25 secs.	90+(120V)/130+(240V) @ 25 secs.	260+@ 25 secs.	260+@ 25 secs.	520+@ 25 secs.	360+@ 25 secs.	720+@ 25 secs.
Shirts/hr wb/discharge	50+@ 70 secs.	50+@ 70 secs.	45+@ 70 secs.	90+@ 70 secs.	90+@ 70 secs.	180+@ 70 secs.	120+@ 70 secs.	240+@ 70 secs.
Time in Tunnel Range (mm:ss)	00:17 - 01:20	00:17 - 01:20	00:17 - 01:46	00:14 - 01:28	00:17 - 01:46	00:11 - 01:39	00:11 - 01:35	00:11 - 01:35
Belt Speed	0.6 - 7.4 FPM (0.18 - 2.3 MPM)	0.6 - 7.4 FPM (0.18 - 2.3 MPM)	0.6 - 7.4 FPM (0.18 - 2.3 MPM)	1.4 - 17.7 FPM (0.4 - 5.4 MPM)	0.6 - 7.4 FPM (0.18 - 2.3 MPM)	1.4 - 17.7 FPM (0.4 - 5.4 MPM)	1.4 - 7.4 FPM (0.18 - 2.3 MPM)	1.4 - 7.4 FPM (0.18 - 2.3 MPM)
Exhaust (Free Air)	n/a	n/a	177 CFM (5 CMM)	300 CFM (8.5 CMM)	300 CFM (8.5 CMM)	350 CFM (9.9 CMM)	388 CFM (11 CMM)	550 CFM (15.6 CMM)
Exhaust Diameter	n/a	n/a	4" (10.16 cm)	6" (15.24 cm)	6" (15.24 cm)	6" (15.24 cm)	8" (20.32 cm)	8" (20.32 cm)
Overall Length	46" (117 cm)	56" (143 cm)	48" (122 cm)	66" (168 cm)	66" (168 cm)	66" (168 cm)	88" (224 cm)	88" (224 cm)
Overall Width	24" (61 cm)	32" (81 cm)	41" (105cm)	41" (105 cm)	65" (166 cm)	65" (166 cm)	41" (105 cm)	65" (166 cm)
Overall Height	24" (61 cm)	24" (61 cm)	48" (122cm)	50" (127 cm)	48" (122cm)	50" (127 cm)	50" (127 cm)	50" (127 cm)
Belt Width	18" (45.7 cm)	26" (66 cm)	30" (76 cm)	30" (76 cm)	54" (137cm)	54" (137cm)	30" (76cm)	54" (137cm)
Chamber Length	18" (45.7 cm)	18" (45.7 cm)	18" (46cm)	27" (69cm)	18" (46cm)	27" (69cm)	41"(104cm)	41"(104cm)
Chamber Infeed Width	19.5" (49.5 cm)	27.75" (70.5 cm)	33.5" (85cm)	33.5" (85 cm)	58.5" (149 cm)	58.5" (149 cm)	33.5" (85 cm)	58.5" (149 cm)
Chamber Infeed Height(adjustable)	2" - 7" (5 - 17.7 cm)	2" - 7" (5 - 17.7 cm)	2" - 7" (5 - 17.7 cm)	2" - 7" (5 - 17.7 cm)	2" - 7" (5 - 17.7 cm)	2" - 7" (5 - 17.7 cm)	2" - 7" (5 - 17.7 cm)	2" - 7" (5 - 17.7 cm)
Heat Range (@ Heater)	0-750 F° (0-399 C°) @ 120 or 240V	0-750 F° (0-399 C°) @ 120 or 240V	0-900F° (0-482C°) @ 240V 0-750F° (0-399C°) @ 120V	0-900 F° (0-482 C°) @ 240V	0-900 F° (0-482 C°) @ 240V	0-900 F° (0-482 C°) @ 240V	0-900 F° (0-482 C°) @ 240V	0-900F° (0-482C°) @ 240V
Heater Size	16"x16"(40.6x40.6 cm)	16"x20"(40.6x50.8 cm)	12" x 24" (30 x 61 cm)	12" x 24" (30 x 61 cm)	12" x 48" (30 x 122 cm)	12" x 48" (30 x 122 cm)	12" x 24" (30 x 61 cm)	12" x 48" (30 x 122 cm)
Total Wattage	1,625 Watts	2,025 Watts	240V / 1 @ 2,600 Watts 120V / 1 @ 2,000 Watts	5,200 Watts Total	5,200 Watts	10,400 Watts @ 240V 12,000 Watts @ 380V	7,800 Watts Total	15,600 Watts Total
Cost/hr to operate based on 10 cents/kwh	16 cents	20 cents	26 cents @ 240V 20 cents @ 120V	52 cents	52 cents	\$1.04	78 cents	1.56 cents
Electrical Specs** Chamber	120V / 12.5A / NEMA 5-15P 240V / 6.5A / 1 Ph. / NEMA 6-15P	120V / 16.5A / NEMA 5-20P 240V / 8.2A / 1 Ph. / NEMA 6-15P	240V / 11A / 1 Ph. / NEMA 6-15P 120V / 16.5A / NEMA 5-20P	240V / 21.6A / 1 Ph. / 3 wire 50/60HZ	240V / 22A / 1 Ph. / 3 wire 50/60HZ	240V / 44A / 1 Ph. / 3 wire 50/60HZ	240V / 34A / 1 Ph. / 3 wire 50/60HZ	240V / 68A / 1 Ph. / 3 wire 50/60HZ
Electrical Connection	Cordset Included	Cordset Included	Cordset Included	All amps shown are FLA (Full Load Amps), not recommended line size! Dryers on this page must be hard wired to the power terminal provided. A licensed electrician must be consulted and should refer to articles, 210.20(a), 215.3 and 310 of the NEC code.				
Optional Power	208V / 6.5A / 1 Ph. / NEMA 6-15P	208V / 8.2A / 1 Ph. / NEMA 6-15P	208V / 11A / 1 Ph. / NEMA 6-15P	208V / 21.6A / 1 Ph. / 3 wire 50/60HZ 240V / 15A / 3 Ph 5 wire 50/60HZ 380V / 9A / 3 Ph. / 5 wire 50/60HZ	208V / 22A / 1 Ph. / 3 wire 50/60HZ 240V / 15A / 3 Ph 5 wire 50/60HZ 380V / 10A / 3 Ph. / 5 wire 50/60HZ	208V / 44A / 1 Ph. / 3 wire 50/60HZ 240V / 28A / 3 Ph 5 wire 50/60HZ 380V / 20A / 3 Ph. / 5 wire 50/60HZ	240V / 21A / 3 Ph 5 wire 50/60HZ 380V / 13A / 3 Ph. / 5 wire 50/60HZ	240V / 40A / 3 Ph 5 wire 50/60HZ 380V / 26A / 3 Ph. / 5 wire 50/60HZ
Unit Weight	89 lbs (41 kg)	114 lbs (52 kg)	172 lbs (78 kg)	304 lbs (138 kg)	380 lbs (173 kg)	480 lbs (218 kg)	424 lbs (193 kg)	Call for details
Shipping Weight**	Box 1 - 57 lbs (26 kg) Box 2 - 16 lbs (7.3 kg) Box 3 - 21 lbs (9.6 kg) Boxes on skid - 115 lbs (52 kg)	Box 1 - 17 lbs (7.7 kg) Box 2 - 24 lbs (10.9 kg) Box 3 - 35 lbs (15.9 kg) Box 4 - 43 lbs (19.5 kg) Box 5—11 lbs (5 kg) Boxes on Skid—226 lbs (105.5 kg)	300 lbs (136 kg)	495 lbs (225 kg)	550 lbs (250 kg)	638 lbs (290 kg)	548 lbs (249 kg)	828 lbs (376 kg)
Shipping Dimensions**	Box #1 - 51.5x25x8" (131x64x20 cm) Box #2 - 21x21x7" (53x53x18 cm) Box #3 - 25x18x6" (64x46x15 cm) On Skid - 52x26x22" (132x96x51cm)	Box #1 - 27x21x7" (69x54x18 cm) Box #2 - 31x21x9" (79x54x23 cm) Box #3 - 36x31x8" (92x79x21 cm) Box #4 - 36x31x8" (92x79x21 cm) Box #5— 31x15x8" (79x38x21 cm) On Skid - 49"x37"x26" (125x94x66 cm)	25" x 48" x 35" (64 x 122 x 89 cm)	50" x 48" x 40" (127 x 122 x 102 cm)	70" x 42" x 58" (178 x 107 x 148 cm)	70" x 42" x 58" (178 x 107 x 148 cm)	49" x 45" x 56" (125 x 115 x 143 cm)	69" x 49" x 58" (176 x 125 x 148 cm)



1 in = 2.54 cm
1 lb = 0.454 kg

LR_D-SERIES_0921

* Production speeds are estimates are based on 16" centers and will vary depending on ink manufacturer, humidity of shop, and other variables.

**All shipping weights and dimensions are for continental US shipping only. Call for other shipping specifications. Ex-works from Bethlehem, PA.